

63M - 6500 BHP - AHTSV

Vessel Specifications



Vessel Specifications

Registration

Year built / builder	August 2007 / Yard 237, ABG Shipyard, Surat, India
Class	DNV-GL 1A1 Fire Fighter (I) Supply Vessel Tug DK (+) HL(2.4) SF TMON
Flag	Marshall Islands
Port of registry	Majuro

Dimensions

Length overall	63.4 m
Breadth moulded	15.8 m
Depth moulded	6.8 m
Draft max (design)	4.8 m
Deadweight	1575 t
Registered tonnage	GRT 1600 t approx. / NRT 480 t approx.

Machinery

Main engines (2 sets)	2 x 2400 kW 1000 rpm @ BHP 3250
Propulsion aft	2 x AGHC-66XF5/4 E3000N
Rudders	2 x ABG Spade Type
Total BHP / kW	6500 BHP / 4800 kW
Bow thruster	1 x 500 kW / 680 BHP
Diesel generators	3 x 425 kW 440V 60Hz 3Phase
Emergency generator	1 x 65 kW

Capacities 100%

Fuel oil	804 m ³
Fresh water	483 m ³
Liquid mud	290 m ³ + 120 m ³
Brine	Combining mud tanks
Drillwater / ballast	538 m ³
Dry bulk	206 m ³ (4 tanks)
Foam tank	20 m ³
Dispersant tank	20 m ³
Deck area	420 m ² (31 m x 12.8 m)
Deck cargo	600 tonnes
Deck strength	5 tonnes
Cool store / freezer	1 x 11 m ³ / 1 x 13 m ³
Dry provision	1

Discharge rates

Loading / discharge station	P / S side
Fuel discharge	120 m ³ per hr
Mud discharge	60 m ³ per hr
Brine discharge	60-120 m ³ per hr
Drillwater discharge	60-120 m ³ per hr
Dry bulk discharge	20 m ³ per hr
Base oil discharge	60 m ³ per hr
Fresh water discharge	150 m ³ per hr

Performance

Bollard pull max and continuous	85 tonnes
Max speed	13.5 knots
Service speed	10.5 knots
Economical speed	10.5 knots

Vessel Specifications

Towing / Anchor handling / Mooring

Towing / anchor handling winch	2 x 150 tonnes pull / 250 tonnes break Brattvaag
Towing / anchor handling winch dim	800 mm diameter x 2090 diameter x 1600 mm
Towing / anchor handling winch cap	1000 m x 62 mm wire each
Tugger winch	2 x 10 tonnes Brattvaag
Crane 1	1 x deck crane 3 mt / 12 m
Windlass	1 x 6 tonnes Brattvaag LBFMG 41038 MA
Capstans	2 x 8 tonnes Brattvaag
Storage reel	1 x 1200 m x 62 mm
Rig chain gipsies	2 x 76 mm
Chain lockers	2 x 60 m ³
Towing pins	1 x pair 200 tonnes SWL
Stern roller	3.6 m x 1.5 m diameter SWL 200 t
Shark jaws	1 x 200 tonnes SWL
Towing wire	1030 m with no spooling device
Spare tow wire	1200 m of 62 mm
Work wire A/H	1 x 250 m x 52 mm / Spare: 1 x 150 m x 58 mm
Grappels for chain	1 x 4 Prongs 130 tonnes SWL
Forged J Chaser	1 x 130 tonnes SWL, J type
Spooling device	Yes

Navigation and communication

Radar 3 cm	2 x Furuno FR-2115
Gyro	Sperry Marine / Navigat x mk 2
Autopilot	Sperry Marine / Navipilot v hsc
Navtex	Furuno NX-700
Joystick	Rolls-Royce / Poscon Joystick
AIS	Furuno FA-150
Echo sounder	Furuno FE-700
Speed log	Furuno DS-80
Satellite navigator (GPS)	Furuno GP-150
Wind sensors	Young / Wind tracker
GDMSS sea area	A1, A2, A3
MF / HF radio	Furuno FS-2570
DSC receiver	1 Furuno FM8800
VHF	2 x Furuno FM8800S; 1 x Sailor RT-2048
Portable radio	2 x Standard Horizon HX280S
Mobile telephone	0813-30940916
Mini-M	Fleet 77
Sat C 1	Furuno Felcom-15
V-Sat	Sat. Nav iDirect 3000
Intercom system	Hanshin / HPA-9200-2

Vessel Specifications

Rescue equipment

Hospital	1 x sick bay
Fire fighting equipment	4 complete sets
MOB boats	FRC for 9 men
MOB boat engine	2 x 60 HP outboard Mercury
Radar transponders	2 x SART / RT-10
Emergency beacon	1 x EPIRB / Float free type
GDMSS VHF	3 x Furuno FM-8
Survival suits	36 pieces / 1 in each cabin
Life jackets	58 pieces
Life rafts	4 of 20 each

Accommodation

Cabins / beds	4 x 1 man plus 14 x 2 men cabins
Crew / passengers	32 men
Mess / dayroom	2

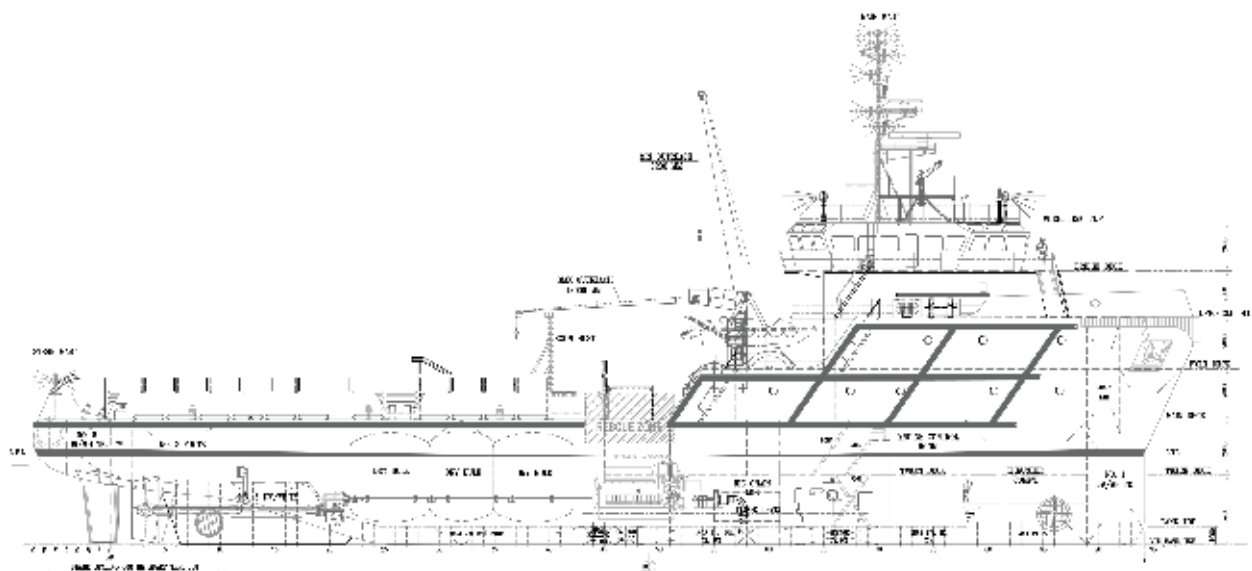
Last revision October 2016

Tank Capacities

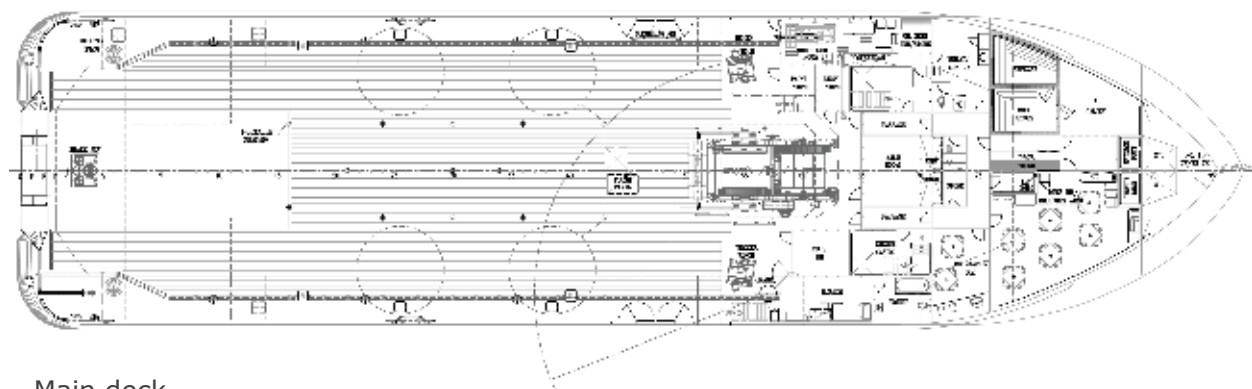
	SG	Fuel oil	Pot water	Drill water	Ballast water	Liquid mud	Brine m3	Base oil	Methanol	Dry bulk	Oil recovery
	m3	0,850	1,000	1,000	1,025	2,500	2,500	0,830	1,120	1,380	1,000
NO.1 F.W . TK (P)	106.8										
NO.1 F.W . TK (S)	106.80		106.80								
NO.2 FW TK (P)	96.10		96.10								
NO.2 FW TK (S)	96.50		96.50								
NO.3 F.W . TK (P)	38.90		38.90								
NO.3 F.W . TK (S)	38.90		38.90								
NO. 1 DW / WB TK	104.40				107.01						
NO. 2 DW / WB TK (P)	126.90				130.07						
NO. 2 DW / WB TK (S)	126.90				130.07						
NO. 3 DW / WB TK (C)	33.30				34.13						
NO. 4 DW / WB TK (P)	51.10				52.38						
NO. 4 DW / WB TK (S)	51.10				52.38						
NO. 5 DW / WB TK (P)	22.50				23.06						
NO. 5 DW / WB TK (S)	22.50				23.06						
NO. 1 F.O. TK (P)	135.40	115.09									
NO. 1 F.O. TK (S)	130.50	110.92									
NO. 2 F.O. D.B. TK ('C)	60.80	51.68									
NO. 3 F.O. TK (P)	135.60	115.26									
NO. 3 F.O. TK (S)	135.60	115.26									
NO. 4 F.O.D.B. TK (P)	64.30	54.65									
NO. 4 F.O.D.B. TK (S)	64.30	54.65									
FO SETTLING TANK (P)	13.60	11.56									
FO SETTLING TANK (S)	13.60	11.56									
FODS TANK (P)	25.60	21.76									
FODS TANK (S)	25.60	21.76									
1+A9+A16	28.40										
SLUDGE TK ('C)	8.10										
BILGE HOLDING TK (C)	10.70										
DISPERSANT TANK (P)	21.30										
FOAM TK (S)	21.30										
NO 1 LIQUID MUD TK (P)	72.70					181.75					
NO 1 LIQUID MUD TK (S)	72.70					181.75					
NO 2 LIQUID MUD TK (P)	72.30					180.75					
NO 2 LIQUID MUD TK (S)	72.30					180.75					
RIG CL/LIQ MUD TK (P)	65.00										
RIG CL/LIQ MUD TK (S)	65.00										
CEMENT TANK 1	63.80									88.04	
CEMENT TANK 2	63.80									88.04	
CEMENT TANK 3	39.40									54.37	
CEMENT TANK 4	39.40									54.37	
Weight in Tons		684.2	377		552	725				285	
Volume in m³		804.9	377		538	420				206	

All figures shown are based on tank volume at 100% filling.

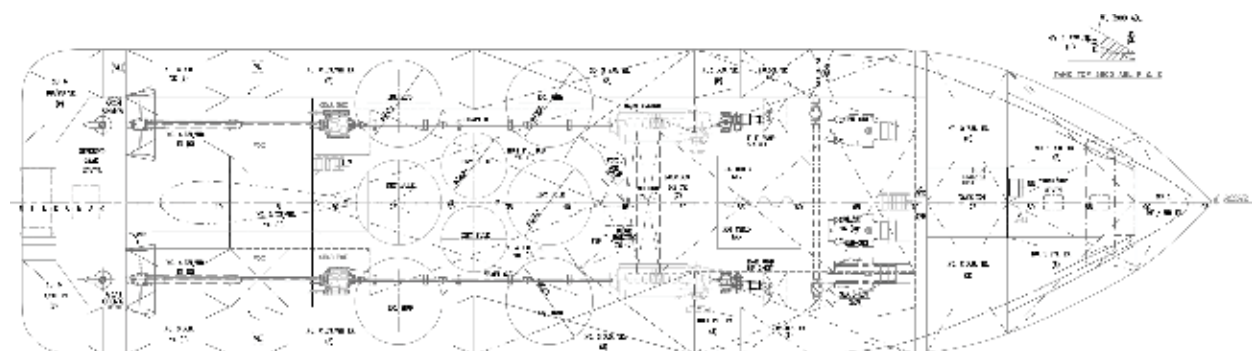
GA Specifications



Profile

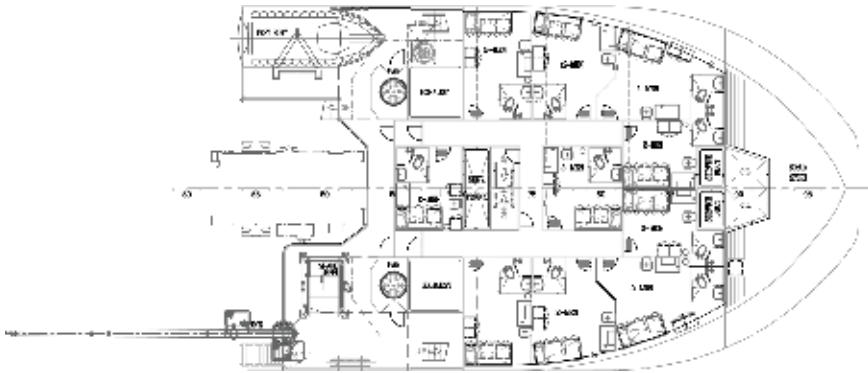


Main deck

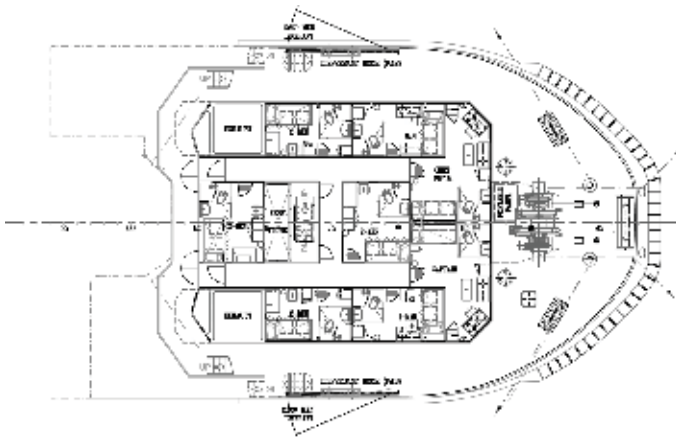


Below deck

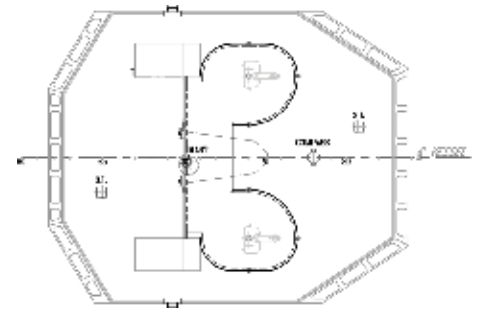
GA Specifications



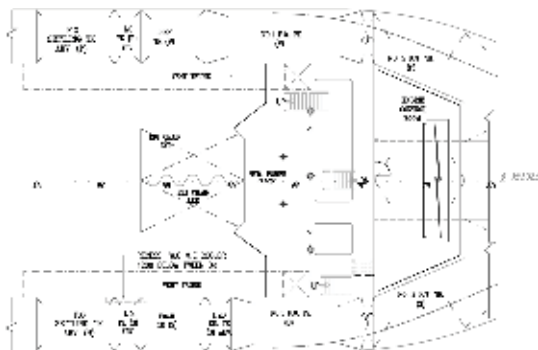
Forecastle deck



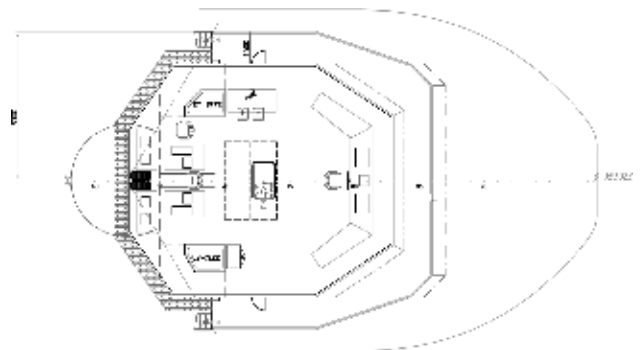
Upper forecastle deck



Nav. bridge deck



Tween deck



Bridge deck