

57 M - 4200 BHP - Platform Supply Vessel

Vessel Specifications



Vessel Specifications

Registration

Year built / builder	2002, Cheoy Lee Shipyard Limited, Hong Kong
Port of registry / flag	Majuro / Marshall Islands
Class	ABS, +A1, Fire Fighting Vessel Class 1, Offshore Support Vessel, E, +AMS

Dimensions

Length overall	57.50 m
Breadth moulded	13.80 m
Depth	5.50 m
Max draft	4.50 m
Deadweight	1350 t
GRT / NRT	1369 t / 410 t

Machinery

Main engines	4200 bhp - 2 x 2100 bhp @ 1600 rpm Caterpillar 3516B (B rating)
Propulsion	Twin screw fixed pitch in Kort nozzles
Bow thruster	1 x 350 kw, Schottel, STT 170 LK, 5 tonnes thrust
Main generator	3 x Caterpillar 3408C, 315 kw each, 415 v, 3 ph, 50 Hz
Emergency generator	1 x Perkins 65 kw, 415 v, 3 ph, 50 Hz
Freshwater maker	1 x 5 t / day, reverse osmosis type
Oily water separator	1.0 m ³ / hr with 15 ppm alarm
Sewage treatment plant	50-person capacity

Deck crane

Crane	Tadano Telescopic Boom Crane M-500
SWL	18 tonnes @ 5.5 m radius 1.98 tonnes @ 22 m radius

Performance

Max speed	13 knots
Service speed	10 knots

Capacities

Fuel oil	369 m ³
Fresh water	200 m ³
Drill water	383 m ³
Liquid mud / MEG	254 m ³
Bulk	187 m ³ (4 x 1650 ft ³)
Foam and detergent	11 m ³ each
Chiller and freezer	8 m ³ and 6 m ³ each
Deck cargo capacity	700 t @ 7 t / m ²
Clear deck area	352 m ² (32 m x 11 m)

Transfer rates

Fuel oil	1 x 150 m ³ / hr @ 75 m head
Fresh water	1 x 75 m ³ / hr @ 75 m head
Drill water	1 x 75 m ³ / hr @ 40 m head
Liquid mud	2 x 70 m ³ / hr @ 85 m head
Bulk cement	60 tonnes / hr @ 50 m head

Vessel Specifications

Navigation and communication

Inmarsat C	Furuno-Felcom 12
GMDSS	Furuno - A1+A2+A3
Radar	1 x Furuno - 1942 Mark-2, 1 x Furuno - FR-2115 (ARPA)
MF / HF DSC	1 x Furuno - DSC 60
VHF radio telephone	2 x Furuno - FM 8500
Autopilot	1 x Robertson - AP9
Gyro compass	1 x Yokogawa - CMZ900
Echo sounder	1 x Furuno - FE 700
Magnetic compass	1 x Saura MK - 150
Doppler log	1 x Furuno - DS-80
Wind indicator	1 x Navman
Barometer	1 x DYM-3
Navtex receiver	1 x Furuno - NX 500
GPS navigator	1 x Furuno - GP 80
EPIRB	1 x Saracom EB-10
SART	2 x Mc Murdo RT9-3
VSAT System	1 x Astra

Deck machinery and equipment

Capstan	2 x 5 t @ 15m / min electro hydraulic, make: Plimsoll
Anchor windlass	1 x 8 t @ 12 m / min electro hydraulic type c/w 2 x wildcats + 2 x warping drums, make: Plimsoll
Anchor	2 x 1200 kg Stockless Bower anchors
Anchor chain	2 x 330 m x 34 mm U2 stud-link chain

Firefighting and life saving equipment

FiFi system	FiFi class 1
Fire Monitors	2 x 1200 m ³ / hr @ 12 bar (with remote control) 1 x monitor fitted with double barrel for foam discharge
Fire pumps	1 x 1200 m ³ / hr driven by port main engine 1 x 1200 m ³ / hr driven by independent diesel driven engine
Rescue boat	1 x 6 person rigid inflatable rescue boat with launching davit
Life rafts	3 x 25 persons each on port and starboard side
Cascade system	15 person x 1 hr @ 40 l / min
Safety equipment	As per the LSA

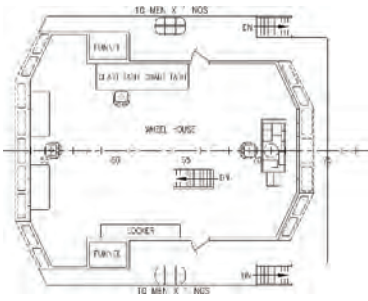
Accommodation (54 bunks)	10 x 4 berth cabin = 40 berths 5 x 2 berth cabins = 10 berths 4 x 1 berth cabins = 4 berths 1 x 1 berth hospital + 1 x 1 berth office
--------------------------	--

Last revision February 2017

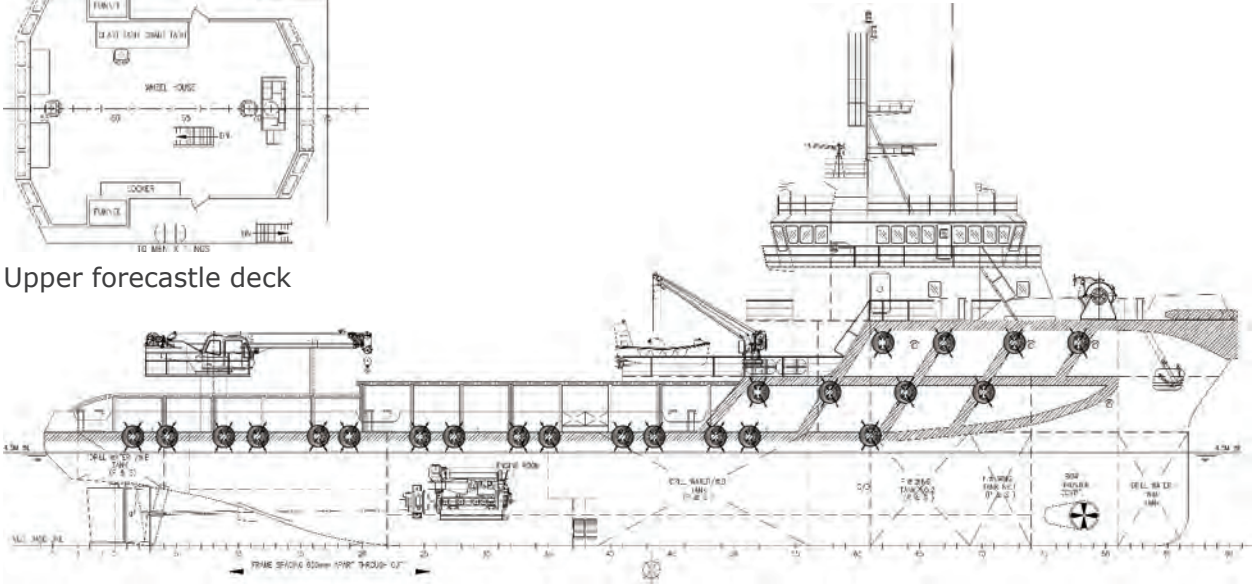
Tank Capacities

Tanks	SG m³	Fuel oil	Pot water	Drill water	Ballast water	Liquid mud	Brine	Base oil	Glycol	Dry bulk	Oil recovery
		0.850	1.000	1.000	1.025	2.500	2.500	0.830	1.120	2.40	1.00
F.W. Wing Tank Port	60.02		60.02								
F.W. Wing Tank Stbd	60.02		60.02								
F.W. DB Tank Centre	79.51		79.51								
DW / WB FP TK (C)	53.78			53.78							
No. 1 DW/WB TK Stbd	23.12			23.12							
No. 1 DW/WB TK Port	23.12			23.12							
No. 2 DW/WB TK Port	37.94			37.94							
No. 2 DW/WB TK Stbd	37.94			37.94							
No. 3 DW/WB TK Port	53.91			53.91							
No. 3 DW/WB TK Stbd	53.91			53.91							
No. 4 DW/WB TK Center	69.41			69.41							
No. 5 DW/WB TK Stbd	14.70			14.70							
No. 5 DW/WB TK Port	14.70			14.70							
No. 1 FO DB TK Stbd	54.12	46.00									
No. 1 FO DB TK Port	54.12	46.00									
No. 2 FO DB TK Stbd	47.68	40.53									
No. 2 FO DB TK Port	47.68	40.53									
No. 1 FO Wing Stbd	34.00	28.90									
No. 1 FO Wing Port	34.00	28.90									
No. 2 FO Wing Stbd	39.27	33.38									
No. 2 FO Wing Port	39.27	33.38									
FO Day Tank Stbd	9.36	7.96									
FO Day Tank Port	9.36	7.96									
Liquid Mud Tank No. 1	127.00					317.50					
Liquid Mud Tank No. 2	127.00					317.50					
Lube Oil Tank	4.58										
Foam Tank	10.96										
Detergent Tank	10.96										
Bilge Holding	6.92										
Dirty Oil Tank	6.92										
Dry Bulk No. 1	46.72									64.47	
Dry Bulk No. 2	46.72									64.47	
Dry Bulk No. 3	46.72									64.47	
Dry Bulk No. 4	46.72									64.47	
Weight in tonnes		314	200	383		635				258	
Volume in m³		369	200	383		254				187	

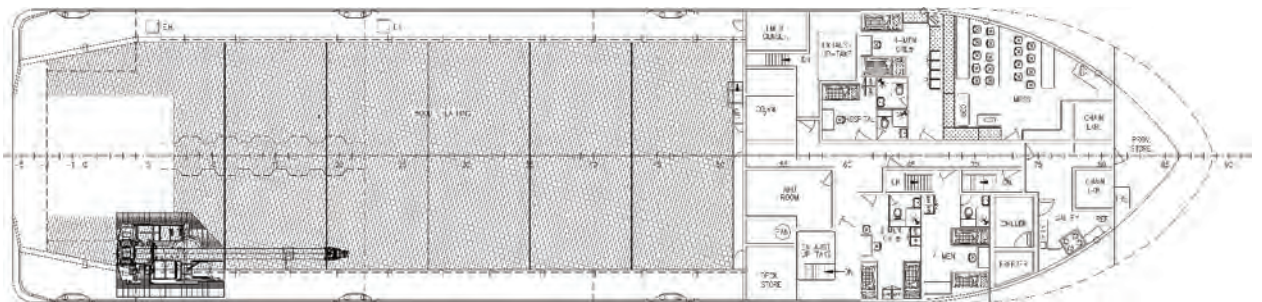
GA Specifications



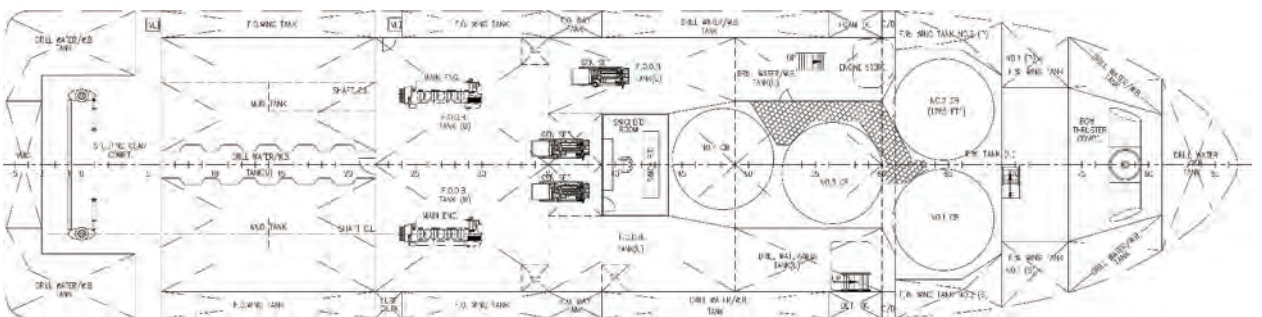
Upper forecastle deck



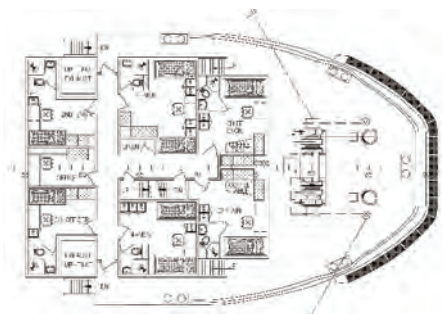
Outboard profile



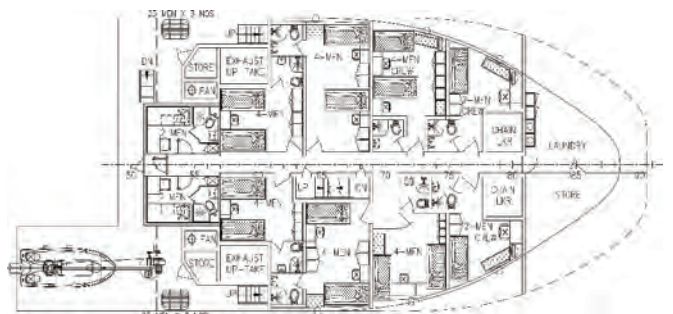
Main deck



Below main deck



Upper forecastle deck



Forecastle deck

Tadano Telescopic Boom Crane M-500

Main boom length 9.7 meters to 41.2 meters
Load chart - reduced 33%

RADIUS IN METERS	MAIN BOOM LENGTH IN METERS						
	9.7	16.0	22.3	28.6	34.9	38.05	41.2
2.5	30.15	20.10	13.40	8.04			
3.0	30.15	20.10	13.40	8.04			
3.5	30.15	20.10	13.40	8.04	6.70		
4.0	26.47	20.10	13.40	8.04	6.70	5.36	
4.5	23.79	20.10	13.40	8.04	6.70	5.36	
5.0	21.44	18.76	13.40	8.04	6.70	5.36	4.02
5.5	19.43	17.42	13.27	8.04	6.70	5.36	4.02
6.0	17.76	16.15	12.53	8.04	6.70	5.36	4.02
6.5	16.08	15.01	11.79	8.04	6.70	5.36	4.02
7.0	14.74	13.80	11.19	8.04	6.70	5.36	4.02
8.0		11.73	10.05	8.04	6.16	5.36	4.02
9.0		9.51	8.98	7.71	5.70	5.36	4.02
10.0		7.91	7.40	7.04	5.36	5.19	4.02
11.0		6.57	6.16	6.37	5.09	4.86	4.02
12.0		5.49	5.26	5.70	4.76	4.52	3.95
13.0		4.69	4.42	4.96	4.49	4.22	3.69
14.0			5.65	4.36	4.22	4.02	3.48
16.0			2.78	3.28	3.55	3.55	3.08
18.0			1.98	2.51	2.78	2.95	2.75
20.0				1.94	2.21	2.35	2.41
22.0				1.47	1.74	1.88	1.98
24.0				1.07	1.37	1.54	1.57
26.0				0.67	1.07	1.24	1.31
28.0					0.80	0.94	1.07
30.0					0.54	0.67	0.80
32.0						0.44	0.57
34.0							0.37